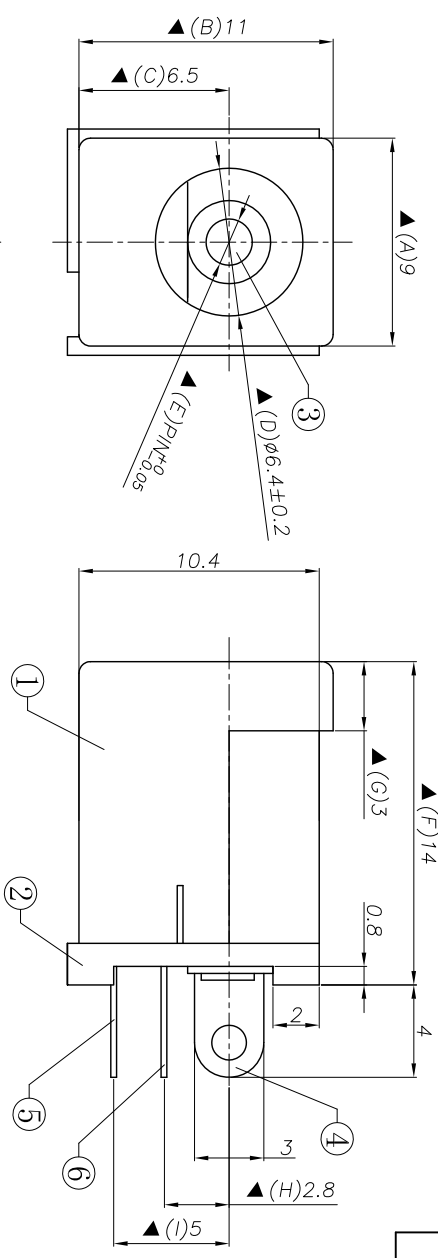


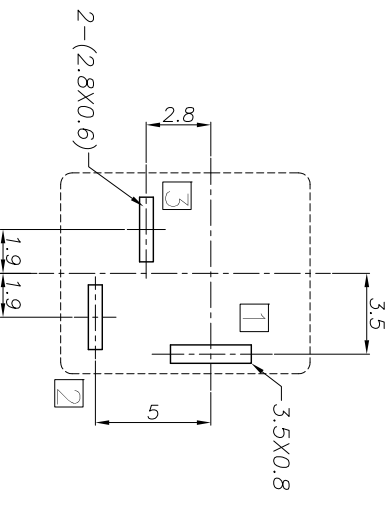
REV. LTR.	DESCRIPTION	SIGN	DATE
	Update drawing	Shangxiuke	2011.04.19



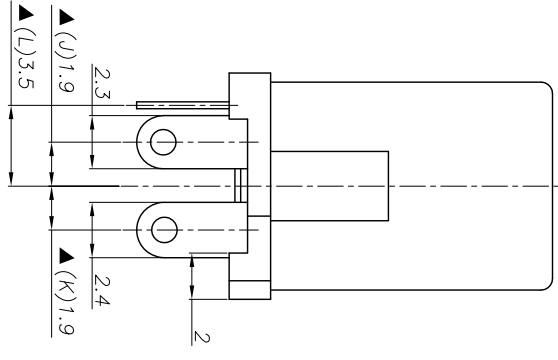
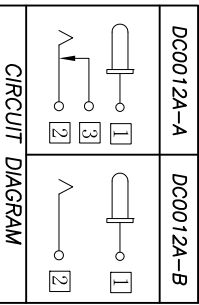
Ordering information:

- DC0012A- □ □
 (1) Series No.
 (2) Schematic option: A、B
 (3) Center pin diameter:
 H=ø2.0, L=ø2.35, J=ø2.5

Model No.	DC0012A-__H	DC0012A-__J	DC0012A-__J
PIN	ø2.0	ø2.35	ø2.5

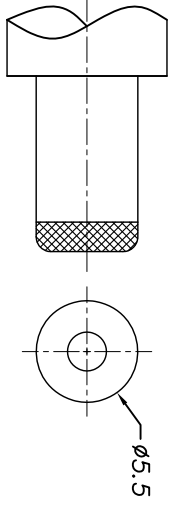


RECOMMENDED P. C. B. LAYOUT
 UNSPECIFIED TOLERANCE: ±0.05
 (COPPER-SIDED VIEW)



Specification:

- Rating : DC 20V 2.5A ;
- Contact resistance : ≤50mΩ ;
- Insulation resistance : ≥100MΩ (500VDC) ;
After test: ≥50MΩ
- Withstanding voltage : 500VAC ;
- Insertion and extraction force : 3N~30N ;
- Life test : 5000cycles min ;
- Operation temperature range: -20℃~70℃
- Preservative temperature range: -40℃~85℃
- Sign "▲" is importance dimension



DC MATE PLUG

NO.	DESCRIPTION	QTY	MATERIAL	PART NO.	REMARK
①	Housing	1	PBT UL94V-0	DC00050-S1	
②	Cover	1	PBT UL94V-0	DC0012A-S2	Black
③	Center pin	1	Brass	DC00050-99H/1/J	CuSn/Nickel plating
④	Center pin terminal	1	Brass t0.35	DC0012A-01	Silver plating
⑤	Tip spring	1	Stainless steel t0.2	DC0012A-02	Silver plating
⑥	Shunt terminal	1	Brass t0.3	DC0012A-03	Silver plating

UNIT: MM	TYPE:	MODEL NO:	PAPER NO: A4	PAGE 1 OF 1
DESIGNER BY:	DC POWER JACK	DC0012A-__	TOLERANCE	ANGLES
CHECK BY:	Zhangxiuke	2011.04.20	±0.3	±2°
APPROVED BY:			SCALE	FULL
				2

承永實業有限公司
 BLUE SOURCES ELECTRONICS CO.,LTD.